



Padlet is a digital canvas
used for curating media and
collaborative learning

Welcome to Padlet Backpack!

With our full-site
license, unlimited
padlets can be shared
amongst teachers and
students!



Have meaningful
discussions,
gather feedback,
bookmark
important readings
& more!





How to Log in to Padlet

- 1) Go to pob-csd.padlet.org
- 2) Click the Google or Microsoft button to register
- 3) For mobile device use, [visit this article](#)



How to Import Content From Another Account

- Once in your existing padlet account, click *import* & choose which padlets to move
- Your padlet is easily shareable by link or QR code

Import existing padlets and collaborators

We can copy all your padlets you have already created at vanilla Pa your Campbell High School Backpack account

You are not logged in to padlet.com

You need to sign in so we know which account to import yo

[Sign in to padlet.com](#)



Privacy

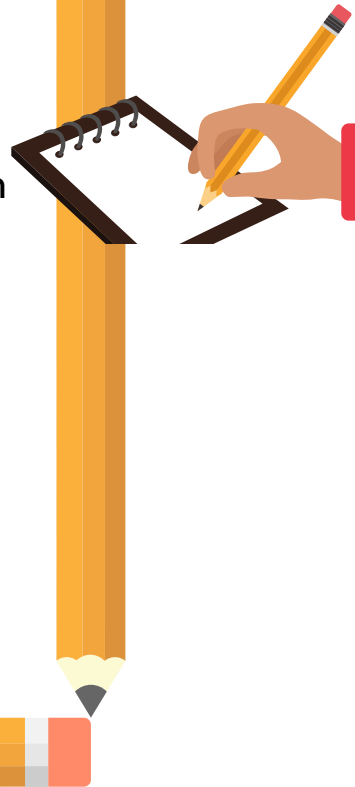
When you share one of your padlets with a class, there are a few options for student access:

Private – Only you and people invited by email can access this wall.

Password – Visitors are required to enter this password to access this wall.

Org-wide - The padlet is visible to all members of the organization.

Secret – Accessible to anyone who has the link. It is hidden from Google and public areas of Padlet.



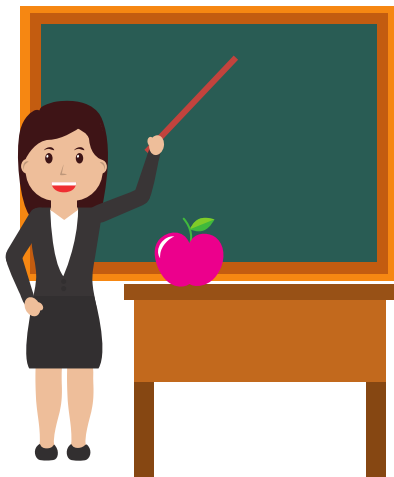
- ☐ Can read
Can view posts. Cannot add posts, edit and approve others' posts, modify and delete padlet, invite collaborators.
- ☒ Can write
Can view and add posts. Cannot edit and approve others' posts, modify and delete padlet, invite collaborators.
- ☐ Can edit
Can view and add posts, edit and approve others' posts. Cannot modify and delete padlet, invite collaborators.

**As the creator,
you can also dictate
access limitations
for your visitors!**



Resources

If you need help in the academic application of Padlet to your classroom, check out these pages!



FOR YOU

[Padlet Support Site](#)
[Quick and Easy How-to Videos](#)
[Classroom Ideas](#)

FOR STUDENTS

[How to draw](#)

